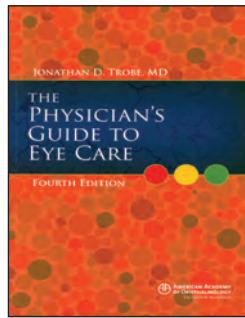


The diagnosis of food allergy is complicated. Living with it can be distressing to patient and family alike.

Your gift can help give hope to a child, a parent, a family member, a friend.

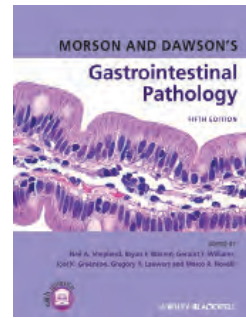
To contribute to food allergy research, education and patient care at the U-M, call 734-998-7705 or visit medatmich.org/UMFoodAllergy.



Edited by Rashid Bashshur, Ph.D., director of the UMHS eHealth Center: *Telemedicine and e-Health*, May 2013 edition. Mary Ann Liebert, Inc., 2013.

Edited by Joel K. Greenson (M.D. 1984), professor of pathology; Neil A. Shepard; Bryan F. Warren; Geraint T. Williams; Gregory Y. Lauwers and Marco R. Novelli: *Morson and Dawson's Gastrointestinal Pathology*, fifth edition. Wiley-Blackwell, 2012.

By Jon A. Jacobson, M.D., professor of radiology and director of the Division of Musculoskeletal Radiology: *Fundamentals of Musculoskeletal Ultrasound*, second edition. Elsevier, 2013.



Edited by Pauline K. Park, M.D., associate professor of surgery and co-director of the Surgical Intensive Care Unit: *Current Concepts in Adult Critical Care*, 2013 edition. Society of Critical Care Medicine, 2013.

By Alexandra Minna Stern, Ph.D., professor of obstetrics and gynecology: *Telling Genes: The Story of Genetic Counseling in America*. The Johns Hopkins University Press, 2012.

By Jonathan D. Trobe, M.D., professor of ophthalmology and visual sciences, of neuro-ophthalmology, and of neurosurgery: *The Physician's Guide to Eye Care*, fourth edition. The American Academy of Ophthalmology, 2012. —GS

